



TRAFFIC.AT
Verkehrsmanagement

Traffic Data – The Next Generation

product overview



The future is now

With the help of its sensor-infrastructure TRAFFIC.AT acquires traffic data of downtown areas and main traffic routes. Real-time traffic data measurements are conducted continuously 365 days a year facilitating the traffic management of companies as well as individuals.

The advantages are obvious!

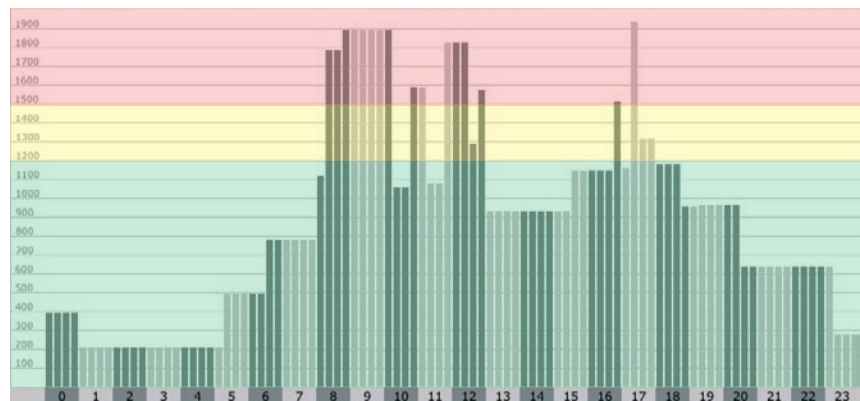
- spotting of free routes
- evasion of congestion
- optimisation of human resources, vehicle park utilisation, route planning
- savings on fuel-cost
- elimination of dead time

The information to guide you through

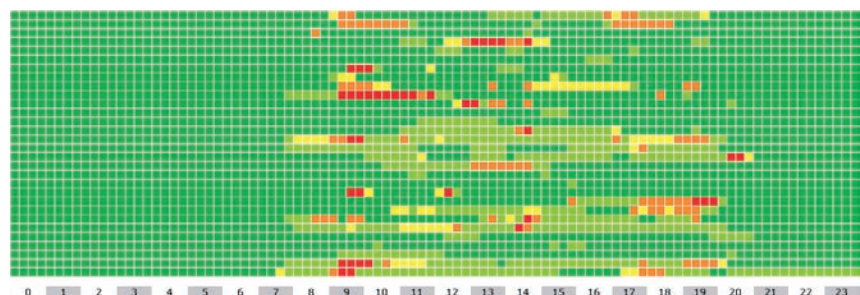
Expect more from us! The traffic data of the next generation provides you with the full picture.

- traffic data updated by the minute
- free, congested and standstill
- impartial traffic data
- car count data
- no extrapolation but realtime data

Daily overview
Averaged values for 15 minutes diagram

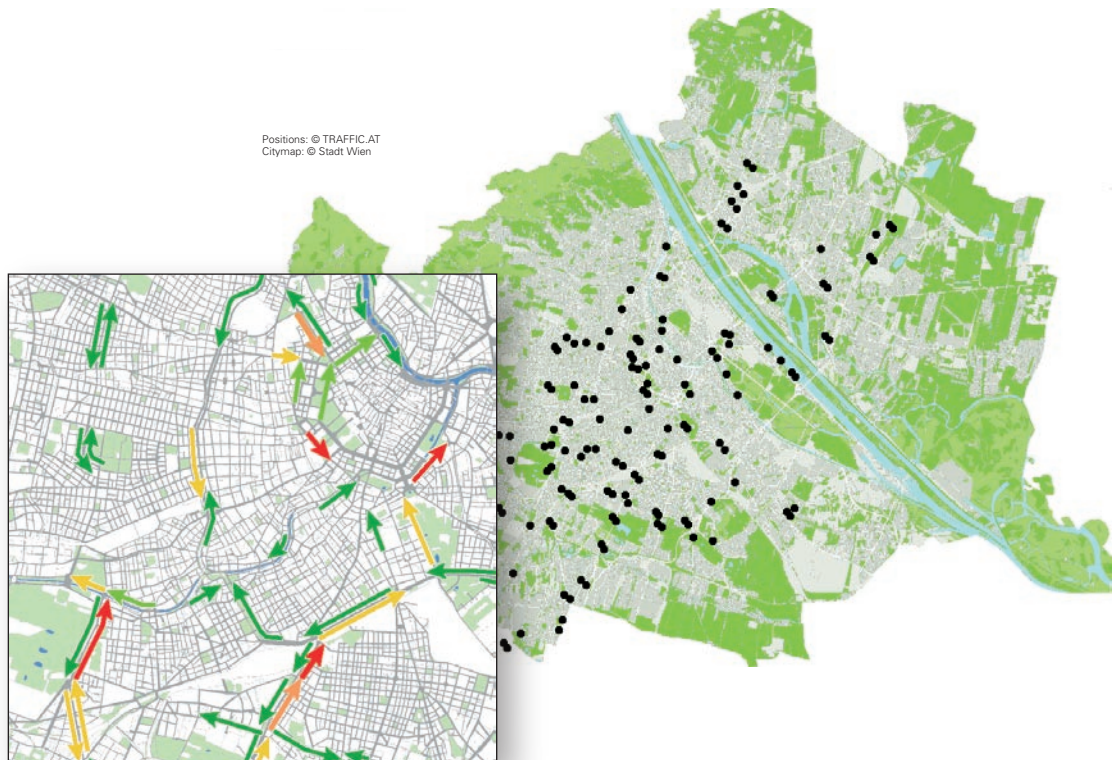


Monthly overview
Averaged values for 15 minutes diagram



At the pulse of the action

The sensors are well spread and therefore always at the right place at the right time. 24 hours a day. 365 days a year. Live.



Traffic data. Who may be concerned? ...and why?

- Contentprovider Provide your customers with more spare time – with our traffic data it is now possible.
- Business How to be one step ahead of the competition? Nothing easier than that. Optimise the travel time of your co-workers with our live traffic data and convince your customers with faster service. Furthermore, you can reduce costs, avoid stress and protect the environment.
- Public authorities Strengthening the economy and increasing the quality of life – these are important tasks of the public authorities. City-wide sensor coverage – once an impossible dream, now reality. No road works, no complex installations – we install and maintain the sensor infrastructure of your city.

Detailed visualisation



public information service

TRAFFIC.AT traffic data can also be provided to you in a highly visual and easy-to-grasp form.

We help you to find the right kind of presentation - whether in list format for your vehicle park management or graphically e.g. in a GIS-application.

The data is delivered to you e.g. over a Webbrowser, XML-over-http (pull or push) or SOAP.

Options for presentation

- interactive city plan (computer monitor, PDA, ...)
- Infoscreens
- SMS service
- MMS service
- List view for your database or vehicle park management

In co-operation with our partners, enterprises with many years of experience in the GIS area, we also offer special solutions tailored for your business.

Facts and Figures



TRAFFIC.AT sensor

Measurement principle: Infrared

Processing:

Logic integrated into the sensor pre-evaluates the measured values.

Further processing and an in-depth evaluation are accomplished in our servers.

Energy:

Solar powered

Data communication:

Radio

Installation:

Within the roadway range in approx. 5m height, no road works, no interference with the flow of traffic

TRAFFIC.AT Verkehrsmanagement GmbH
Salzgries 16 Top 7
A- 1010 Vienna

p +43 720 10 20 10 -0

e office@traffic.at

i <http://traffic.at/>